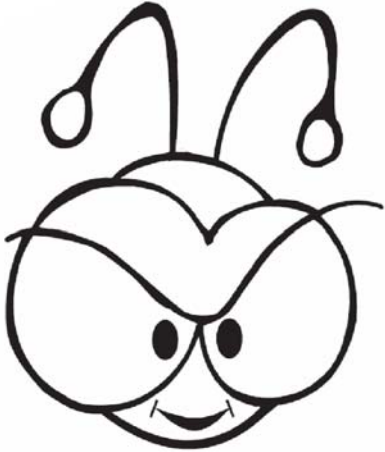


STOP SPREADING SEEDS



Here are some tips to help prevent weeds from spreading!

- Stay on trails! Going off-road disturbs native plants and creates places for weeds to grow.
- Check your bicycles, motorcycles and ATV's for weed seeds and plant parts before leaving an area with weeds. Get your parents to check vehicles and machinery.
- Remove burs and spiny seedpods from clothing and your pets.
- Dispose of weed seeds and weed plant fragments with household garbage (DO NOT COMPOST WEED SEEDS OR ROOTS).